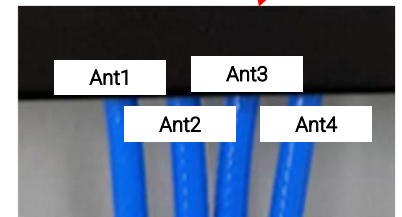


TAMP161

4G LTE / 5G MIMO Broadband High Performing Antenna Module

Features and Benefits

- **High Efficiency MIMO Antenna Module Covering ALL 4G LTE and 5G Sub 6 Bands**
- **Operating frequency**
Ant 1: 5G Main (617 ~ 5925MHz), White
Ant 2: 5G Aux (1710 ~ 5925MHz), Red
Ant 3: 5G Aux (1710 ~ 5925MHz), Red
Ant 4: 5G Main (617 ~ 5925MHz), White
- Supports 4x4 MIMO at 1710~6000MHz
- Supports 2x2 MIMO at 600~960MHz
- High Peak Gain up to 6 dBi
- High Efficiency up to 90%
- RoHS Compliance
- Antenna Size: 190 x 140 x 22.5 mm
- Cable length: 0.5m
- Connector: SMA (male)



Antenna information

INTRODUCTION

The TAMP161 is a MIMO antenna module supporting entire 4G LTE and 5G sub6 bands, including the very low 600 MHz band, with high radiation performance and isolation.

It supports 2x2 MIMO at the low bands and 4x4 MIMO in mid/high bands. It can be used for advanced wireless communication devices or systems.

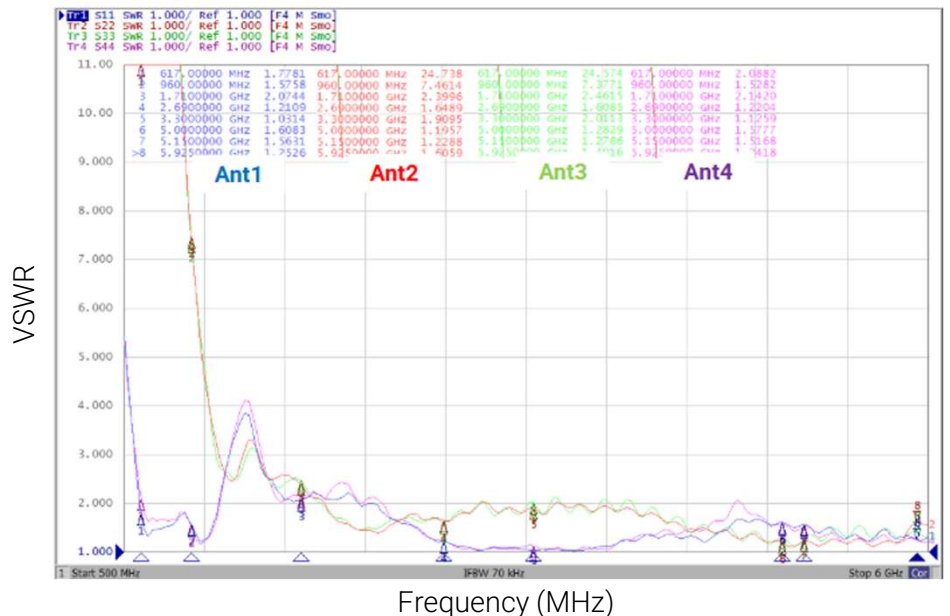
APPLICATION

The TAMP161 is ideal for 4G/5G routers, gateways, and connected devices requiring stable, wideband MIMO performance.

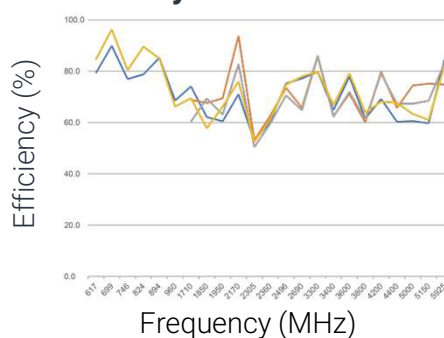
Common applications include enterprise and home networking, industrial IoT, logistics and asset tracking, transportation systems, and CPE deployments. Designed for indoor use, it provides dependable connectivity wherever strong, multi-band RF performance is required.

Performance

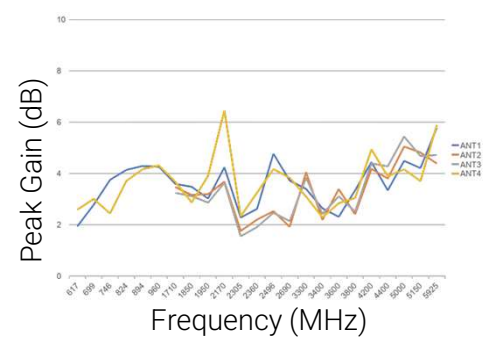
VSWR



Efficiency



Peak Gain



Contact Details:

US: +1-3213931039

TW: +886-963383713

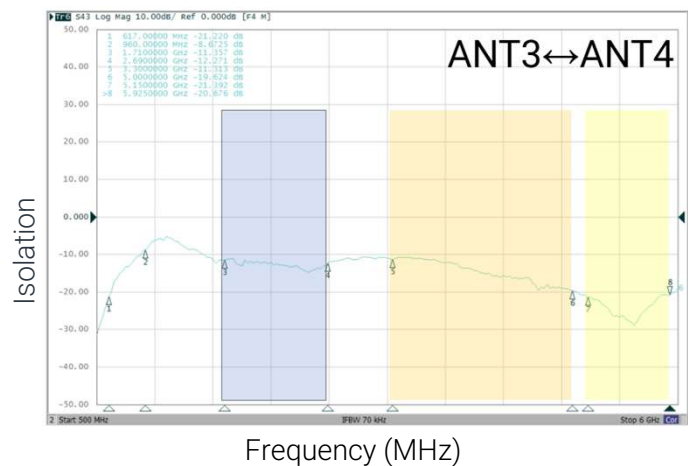
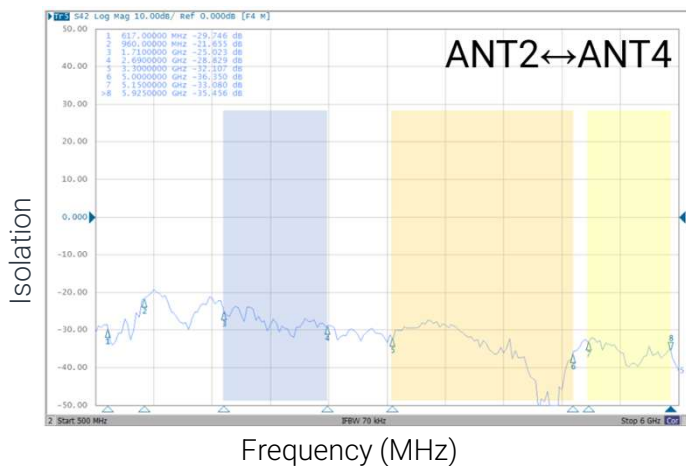
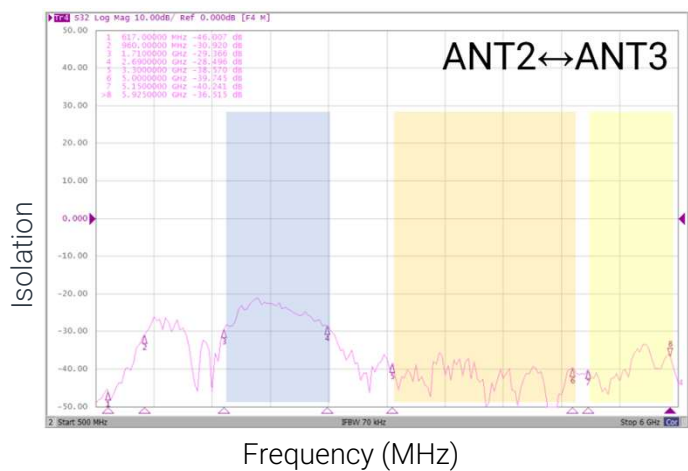
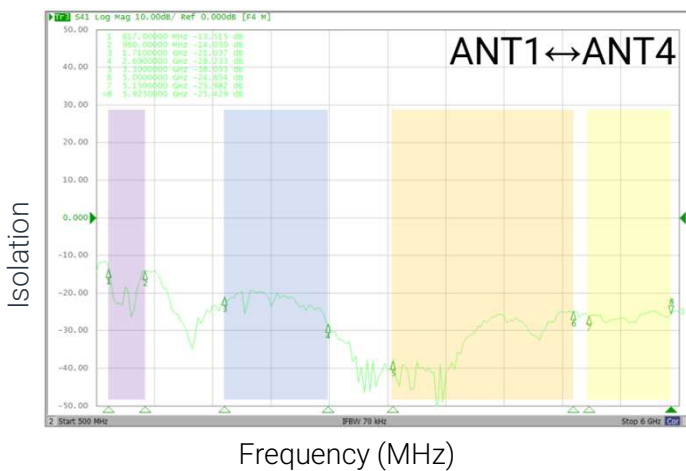
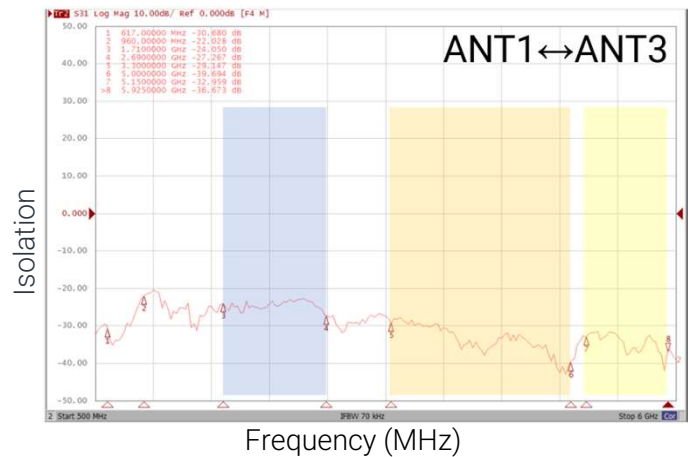
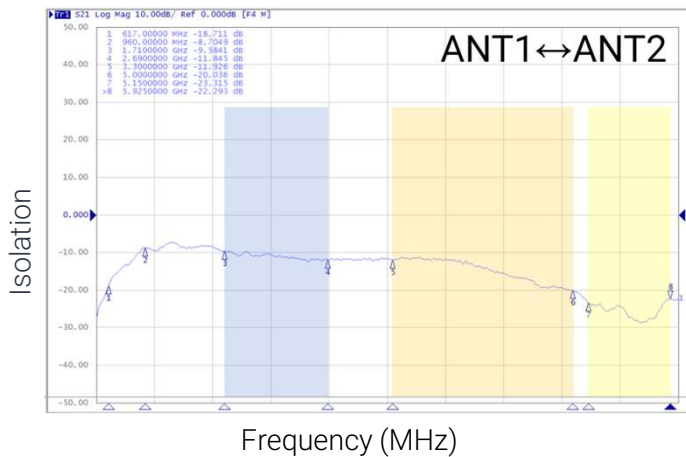
KR: +82-1047149824

IN: +91-9967297130

Email: sales@skymirr.com

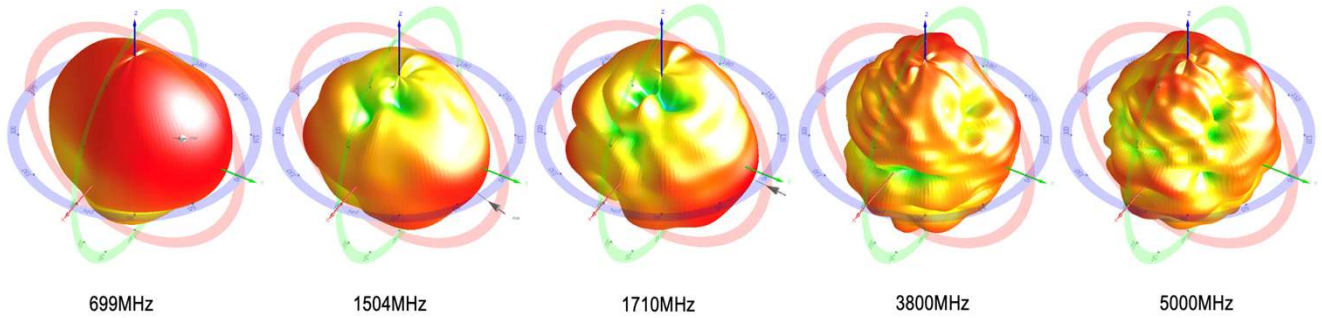
Website: www.skymirr.com

Antenna Isolation

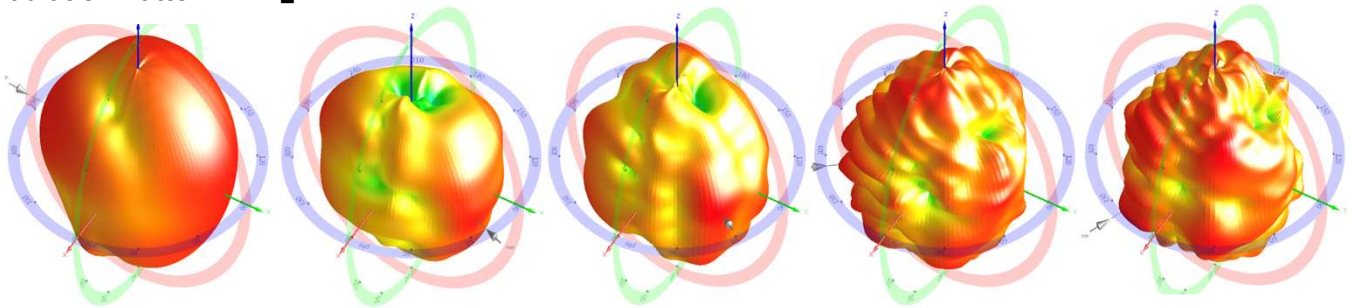


Radiation Patterns

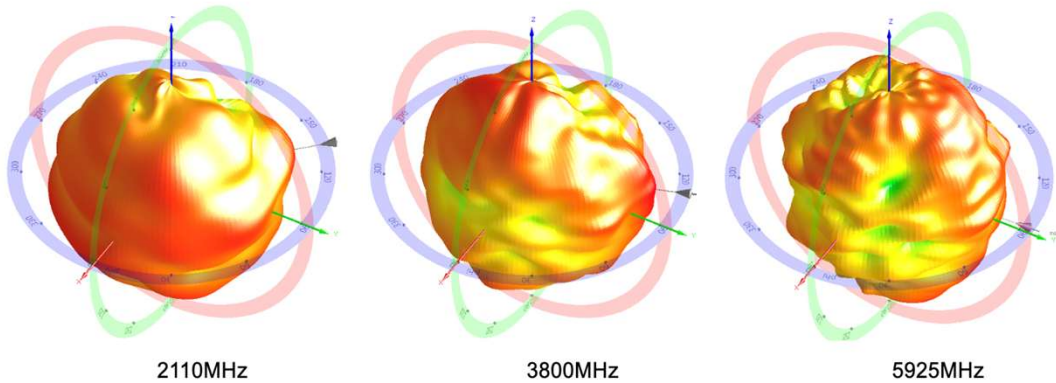
Radiation Pattern ANT_1



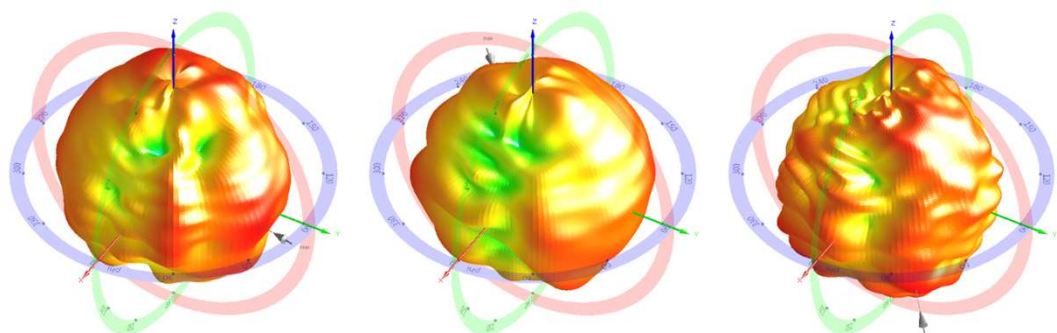
Radiation Pattern ANT_4



Radiation Pattern ANT_2



Radiation Pattern ANT_3



Peak Gain/Efficiency

ANT 1	Frequency [MHz]	617	699	746	824	894	960
	Efficiency [%]	79.3	89.9	77.0	78.8	85.2	68.6
	Peak Gain [dBi]	1.9	2.8	3.8	4.1	4.3	4.3

ANT 1	Frequency [MHz]	1710	1850	1950	2170	2305	2360	2496	2690	3300	3400	3600	3800	4200	4400	5000	5150	5925
	Efficiency [%]	74.1	62.1	60.5	71.0	52.9	60.3	75.2	77.2	79.8	64.9	77.9	61.5	69.2	60.3	60.6	59.7	84.5
	Peak Gain [dBi]	3.6	3.5	3.0	4.2	2.3	2.6	4.8	3.7	3.4	2.6	2.3	3.3	4.4	3.3	4.5	4.2	5.8

ANT 2	Frequency [MHz]	1710	1850	1920	2170	2305	2360	2496	2690	3300	3400	3600	3800	4200	4400	5000	5150	5925
	Efficiency [%]	68.8	67.7	69.4	93.8	53.1	62.6	73.5	65.8	86.0	62.5	71.2	60.1	79.8	65.7	74.4	75.2	74.8
	Peak Gain [dBi]	3.5	3.2	3.2	3.7	1.8	2.2	2.5	1.9	4.1	2.2	3.4	2.4	4.2	3.8	5.1	4.8	4.4

ANT 3	Frequency [MHz]	1710	1850	1920	2170	2305	2360	2496	2690	3300	3400	3600	3800	4200	4400	5000	5150	5925
	Efficiency [%]	60.4	69.3	63.1	82.8	50.4	59.5	70.6	64.8	85.7	62.3	72.0	61.2	79.0	67.4	67.3	68.5	83.3
	Peak Gain [dBi]	3.2	3.1	2.9	3.6	1.6	1.9	2.5	2.1	3.8	2.4	3.1	2.5	4.4	4.3	5.4	4.7	4.7

ANT 4	Frequency [MHz]	617	699	746	824	894	960
	Efficiency [%]	84.6	96.3	80.4	89.6	85.0	66.2
	Peak Gain [dBi]	2.6	3.0	2.4	3.7	4.2	4.3

ANT 4	Frequency [MHz]	1710	1850	1950	2170	2305	2360	2496	2690	3300	3400	3600	3800	4200	4400	5000	5150	5925
	Efficiency [%]	69.5	57.8	66.2	76.0	52.5	61.2	74.7	77.9	79.9	66.9	79.2	63.9	68.2	67.7	63.3	61.0	82.1
	Peak Gain [dBi]	3.7	2.9	3.9	6.5	2.3	3.3	4.2	3.8	3.1	2.3	2.8	3.0	4.9	3.9	4.2	3.7	5.9

LMR195 Cable loss

Frequency	Loss for 1m cable [dB]	Loss for 2m cable [dB]
617MHz	-0.33	-0.61
960MHz	-0.42	-0.77
1710MHz	-0.55	-1.05
2690MHz	-0.71	-1.34
3300MHz	-0.84	-1.54
5000MHz	-1.03	-1.95
5150MHz	-1.07	-2.04
5925MHz	-1.11	-2.12

Cable Length: 0.5m (Option with 1m and 2m additional cable)

Dimension (unit: mm)

